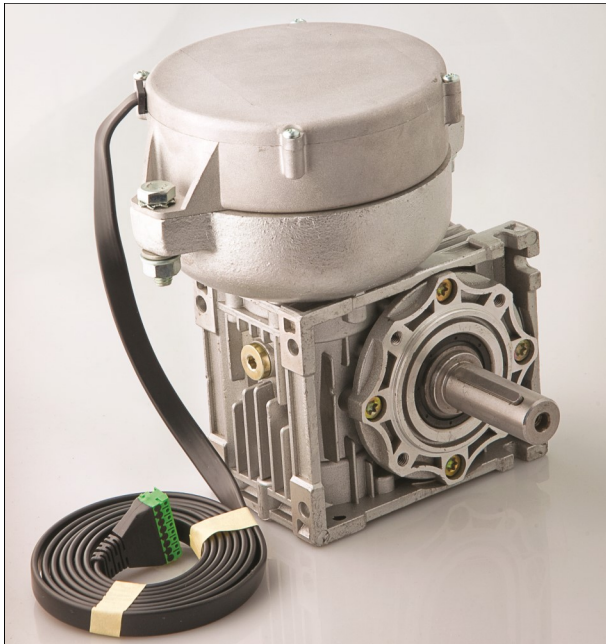


# Specifications

Virtually fits in a 7-inch cube!



ACG's PowerCube™ is a special version of our quiet, long-life UniDrive® Brushless 24VDC motor coupled to a compact and powerful right angle gear reducer.

#### The PowerCube™ Drive Operational Modes:

##### Basic Motor:

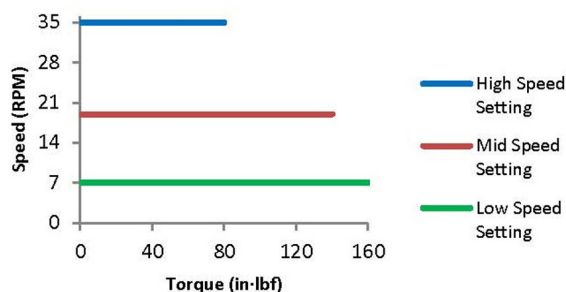
Usable as a standalone drive with the UniDrive® SCC-3 Hi Performance control in the *Basic Motor* setting, it allows simple external control of motor run (on/off), direction, and braking.

##### Smart Conveyor:

In the *Smart Conveyor* Control setting, it can be used to drive Zero Pressure Accumulation conveyors without requiring PLC or computer control, but easily interfaces with either at decision points such as an exit onto other equipment. It's your best value in compact and powerful drive alternatives.

#### 110192 PowerCube™ Assembly

10:1 Reducer, 125W Motor, 110546 Control



## PowerCube™ 24VDC Drive

110192

Brushless DC Motor/Reducer

125 Watt motor with 10:1 Reducer

#### Features and Specifications

The PowerCube™ Drive provides a P<sup>3</sup> solution by integrating three innovative products from a single source that are easy to apply and use.

#### P<sup>1</sup> – 125 Watt 24 VDC UniDrive® Brushless Motor

- Exceptionally Long Life
- Naturally Low Speed and High Torque
- Low Noise
- High Reliability

#### P<sup>2</sup> – UniDrive® Motor Control

- Easily Preset One of 8 Speeds Over a 10:1 Range or;
- Provide a 0-10 VDC Input for Dynamic Speed Control (P/N: 300128 Module can be used)
- Reversible Rotation
- Tight Speed Control within Rated Torque Range
- Effective Electronic Braking

#### P<sup>3</sup> - Right Angle Reducer

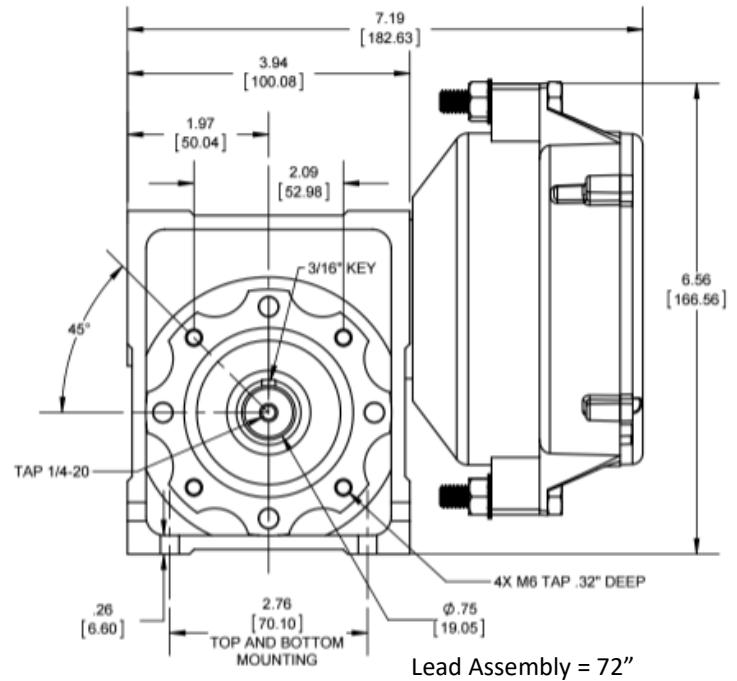
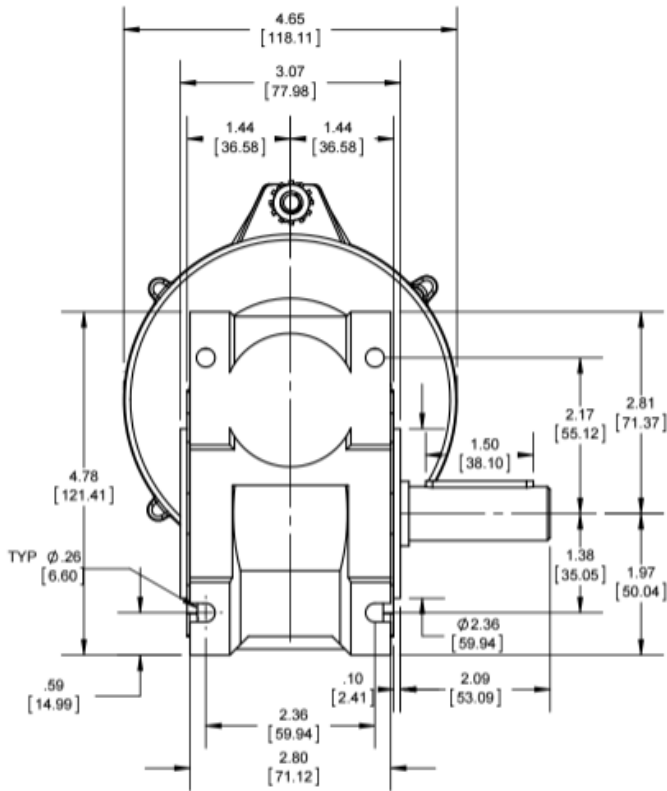
- 10:1 Speed Reduction Ratio w/ Torque-Boost
- Single Shaft (Dual position & hollow shaft options)
- Up to 80 In·Lbf Torque at 35 RPM Output or;
- Up to 160 In·Lbf Torque at 7 RPM

5855 N. Glen Park Road ♦ Milwaukee, WI 53209  
Sales@AutomationControlsGroup.com ♦ Tel (619) 677-6530

10192A02M Rev. 4.1

**Automation  
ControlsGroup**  
Simplicity in Motion

# Specifications



## Quick Start Guide for Basic Motor Control

### Controller: SCC-3 Hi Performance Model 110546

- Place DIP switch 3 in the ON position (slide switch to the right).
- On the 3-pin sensor connector, wire the sensor input (center pin) to the sensor "+" voltage (pin on the right).
- Apply 24VDC to the Slug input (I/O pin2 to start and stop the motor).
- When the Slug Input goes high then I/O pin 4 will go high to indicate the motor is running.

## Quick Start Guide for Smart Conveyor Control Operation

### Controller: SCC-3 Hi Performance Model 110546

- Using Switches 4-6 Set Your Desired Speed
- Set Switch 7 ON and Switch 8 OFF to Match the 125W24 Motor
- Connect the Motor Using the 8 Position Plug
- Connect Power and Ground (24 VDC)
- Using Switch 3 configure location (Exit or Entry zone)
- Using Switch 2 configure the operating mode (ZPA or ZIP)
- 24 VDC PNP input for start-stop

## Model 110192

Speed Selection			
Switches			Output
6	5	4	RPM
Off	Off	Off	35
Off	Off	On	31
Off	On	Off	27
Off	On	On	23
On	Off	Off	19
On	Off	On	15
On	On	Off	11
On	On	On	7

Note: Motor speed can be controlled directly on the 110546 from 1-9 VDC or by using the 300128 speed control

(Refer to user manual for detailed set-up instructions)

For more information, contact:

[Sales@AutomationControlsGroup.com](mailto:Sales@AutomationControlsGroup.com)

Telephone: (619) 677-6530

10192A02M Rev. 4.1

The PowerCube™ and UniDrive® are trademarks or registered trademarks of Milwaukee Electronics Corporation or its subsidiaries.  
Copyright © 2012 Automation Controls Group. All Rights Reserved.

**Automation  
ControlsGroup**  
Simplicity in Motion